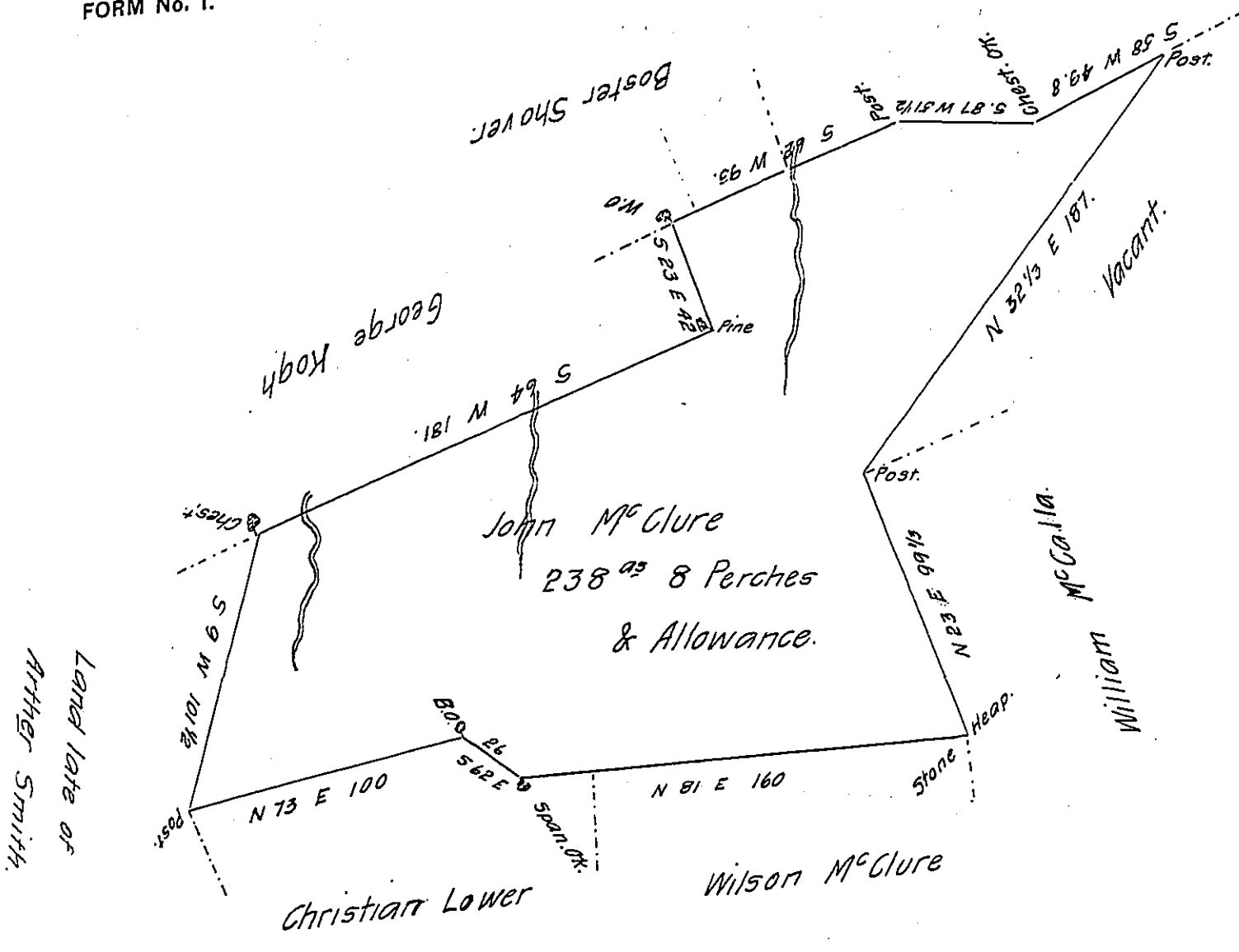


Joseph Soltenberger



The Draught of a Tract of Land Situate in Tyrone Township Cumber-
land County Containing two Hundred and thirty Eight acres and Allow-
ance of Six Per Cent for Roads &c Surveyed the 16th day of April 1800 on
a Warrant granted to John McClure Dated the 9th Day of December
1799

Sam^l Lyon D. S.

To Daniel Bradhead Esquire
Surveyor General of Pennsylvania

IN TESTIMONY that the above is a copy of the original remaining on file in
the Department of Internal Affairs of Pennsylvania, made
conformably to an Act of Assembly approved the 16th day of
February, 1833, I have hereunto set my Hand and caused
the Seal of said Department to be affixed at Harrisburg,
this twenty-first day of December 1905.

Joseph P. Brown
Secretary of Internal Affairs.